

BR REMOTE

Broadcast Camera Systems

your vision

our focus

Elipticam

On-Board Yacht Camera

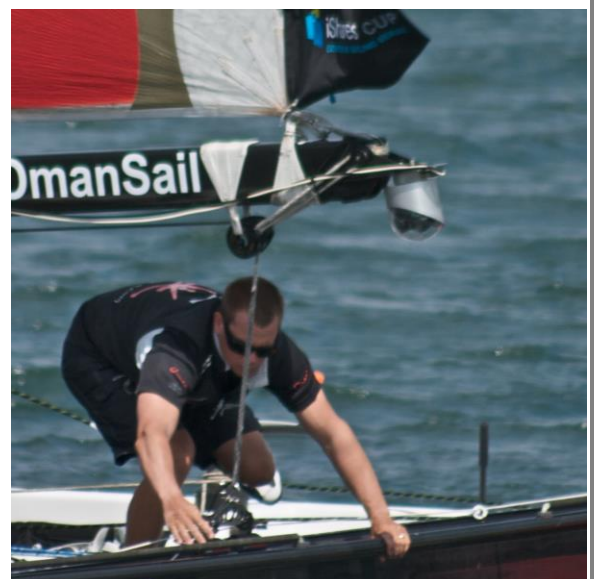


- Full HD
- 2.4Mpixel Sony Exmor sensor
- 360 degree pan, -30 to +90deg. tilt
- Horizon Self Levelling
- Pan, Tilt Zoom, Iris, Focus and CCU control
- Small & Lightweight - only 1.5kg

The **Elipticam Mk3**, from BR Remote, is an innovative development of the dome camera which overcomes the main limitations of this type of design. It can tilt above and below the horizon without being eclipsed by the casing - whichever way up it's mounted.

Utilising the BR Remote proven remote HD camera technology, the **Elipticam Mk3** delivers stunning and dynamic images from the thick of the action. In this picture, a Mk1 is mounted on the end of the boom of this Extreme 40 racing yacht.

The camera can pan continuously through 360 degrees and can therefore also be used to view



competing yachts to the side and behind the yacht to which it is fitted. With its self-correcting roll axis the horizon is kept level, giving a true perspective of the pitch and heel of the yachts.

The outer casing is made from lightweight, black carbon-fibre, both to reduce weight, give strength and to match the material used in many racing yachts.

Before delivery, the **Elipticam Mk3** is dry-nitrogen flushed to remove internal moisture. It also has fan-assisted air circulation to further reduce any tendency for condensation and misting of the dome.

The complete Yacht System comprises a dedicated **Yacht Joystick** and a **Yacht Hub** which can control and power several cameras and also has a radio remote input for inshore racing. The hub can also switch lamps and start/stop recorders with built-in timers etc.

The original **Elipticam** has been used on several race series and has completed many trans-Atlantic crossings. The **Mk3** has been improved with, baffled seals for 'green water' resistance and the latest sensor.

When inshore, control can be taken over by radio from the shore to provide exciting television coverage of events.

Outline Specifications:

Power:	11v - 16v @ 12W max.
Camera:	2.4 Megapixel full HD sensor
Sig/Noise:	>50dB
Lens:	30:1 Zoom, 64deg. wide end.
Pan angle:	360deg. Continuous
Tilt angle:	-30deg. +90deg.
Roll:	Self correcting, +/- 30 deg.
Remote:	Pan, Tilt, Zoom, Focus, Auto/Man Iris, Auto/Man White, Preset White, Rgain, Bgain, Mped, Rped, Bped, Detail, Shutter, Gain, Gamma, Auto Focus On/Off, Auto Iris On/Off, InfraRed On/Off, Water, DNR, Bars, Knee
Output:	HD up to 1080p
Connections:	1 x Fischer 104 (IP68) series for Power & Control 1 x sealed BNC for HDSDI



The **Yacht Joystick** is weatherproof, lightweight and easy to install into panel surfaces. All the buttons are backlit with adjustable brightness.

One particular feature of the Joystick is the '**Water**' button. This reduces the depth of field and makes water droplets on the dome move out of focus, thus making them far less obtrusive.

For further details contact:

BR Remote Ltd.

+44 (0)1590 622440

www.br-remote.com